



Product Service

# CERTIFICATE

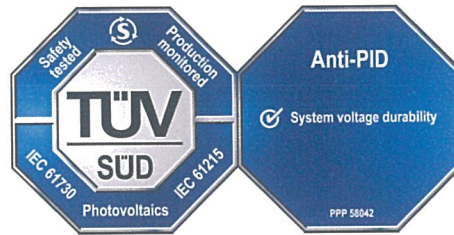
No. Z2 16 02 76729 038

**Holder of Certificate:** Seraphim Solar System Co.,Ltd.

Linnan, Henglin Zhen  
 Wujin District  
 213101 Changzhou, Jiangsu  
 PEOPLE'S REPUBLIC OF CHINA



**Certification Mark:**



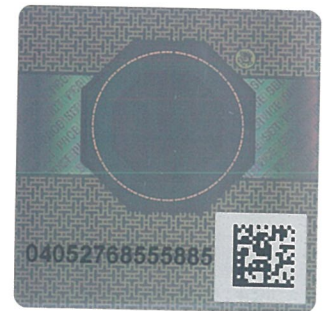
**Product:**

Crystalline Silicon Terrestrial Photovoltaic (PV) Modules  
 Poly-Crystalline Silicon Photovoltaic Module

The product was tested on a voluntary basis and complies with the essential requirements. The certification mark shown above can be affixed on the product. It is not permitted to alter the certification mark in any way. In addition the certification holder must not transfer the certificate to third parties. See also notes overleaf.

**Test report no.:** 704061346609-01

**Valid until:** 2021-02-02



**Date,** 2016-02-03

( Zhulin Zhang )

Page 1 of 2



Product Service

**CERTIFICATE**

No. Z2 16 02 76729 038

**Model(s):**

SRP-260-6PA, SRP-265-6PA, SRP-270-6PA, SRP-275-6PA,  
 SRP-280-6PA, SRP-285-6PA, SRP-290-6PA, SRP-295-6PA,  
 SRP-300-6PA, SRP-305-6PA, SRP-310-6PA, SRP-315-6PA,  
 SRP-320-6PA, SRP-215-6PB, SRP-220-6PB, SRP-225-6PB,  
 SRP-230-6PB, SRP-235-6PB, SRP-240-6PB, SRP-245-6PB,  
 SRP-250-6PB, SRP-255-6PB, SRP-260-6PB, SRP-265-6PB.

**Parameters:**

Rated Output Power  
 at STC:

260W, 265W, 270W, 275W,  
 280W, 285W, 290W, 295W,  
 300W, 305W, 310W, 315W,  
 320W, 215W, 220W, 225W,  
 230W, 235W, 240W, 245W,  
 250W, 255W, 260W, 265W.

Application Class:

Class A

Max. System Voltage:

1000V DC

Test Laboratory:

Yangzhou Opto-electrical  
 product testing institute  
 No.10 West Kaifa Road, Yangzhou,  
 225009 Jiangsu P.R.China

Construction:

Framed, with Junction box,  
 cable and connector.

Fire Safety Class:

Class C

PID Test Condition:

±1000V DC, 96 h, 85% RH, 60°C

**Tested  
 according to:**

IEC 61215(ed.2)  
 IEC 61730-1(ed.1);am1;am2  
 IEC 61730-2(ed.1);am1  
 PPP 58042B:2015

**Production  
 Facility(ies):**

76729